

## Product Information Sheet

| Prod No. | GTIN          | Product Name         | Pack Size | Shelf Life | Serves/Pack | Brand  | Sub Brand  | Type    | Sub Type | PackID   |
|----------|---------------|----------------------|-----------|------------|-------------|--------|------------|---------|----------|----------|
| 12433900 | 9300605133228 | Top 'n' Fill Caramel | 395G      | 12 Months  | 16          | NESTLE | TOP N FILL | FILLING | CARAMEL  | 43995769 |

|                     |  |
|---------------------|--|
| Product Name        | Top 'n' Fill Caramel   |
| Product Description | Caramelised Sweetened Condensed Milk<br>Made with Fresh Milk<br>Smoother & Tastier |

**Ingredients** Ingredients:  
Ingredients: **Milk**, Sugar, **Milk** Solids

**CONTAINS MILK**

| Allergens                               | Formulated Into Product | Via Cross Contact |
|---|-------------------------|-------------------|
| Allergen Name                           |                         |                   |
| <b>No Known Cross Contact Allergens</b> |                         |                   |
| Milk and milk products                  | ✓                       | ✓                 |

**GM Statment** "This product complies with the ANZFSC requirements.All raw materials and detectable processing aids used for the manufacture of this product are obtained from sources that will allow this product not to bear a positive GM statement as defined under Standard 1.5.2 of the ANZFSC."

### Nutritional Information

| Top 'n' Fill Caramel  |                              |                  |                           |
|---|------------------------------|------------------|---------------------------|
| Servings Per Pack: 16<br>Serving Size: 25g                              | Average Quantity per Serving | %DI* per Serving | Average Quantity per 100g |
| Energy  | 320 kJ<br>77 Cal             | 4%               | 1270 kJ<br>304 Cal        |
| Protein   | 1.4 g                        | 3%               | 5.6 g                     |
| Fat-total   | 1.5 g                        | 2%               | 6.0 g                     |
| - Saturated   | <1.0 g                       | 4%               | 3.5 g                     |
| Carbohydrate  | 14.0 g                       | 5%               | 55.8 g                    |
| - Sugars  | 14.0 g                       | 16%              | 55.8 g                    |
| Sodium  | 20 mg                        | 1%               | 80 mg                     |
| *Percentage Daily Intakes are based on an average adult diet of 8700kJ. |                              |                  |                           |

### Statements and Claims

Made with fresh milk

#### Good to Know

Made with fresh milk, it's the ideal ingredient to create sweet indulgences that tempt the taste buds.

### Preparation or User Instructions

Recipe for Caramel Tarts

Find out more at [www.recipes.com.au](http://www.recipes.com.au)

### Country Origin Statement

MADE IN SPAIN

**Storage Instructions**

Store unopened at room temperature

**Contact Details****Company**

Nestlé Australia Ltd,

**Address**

1 Homebush Bay Dr,

**Suburb**

Rhodes

**State**

NSW

**Postcode**

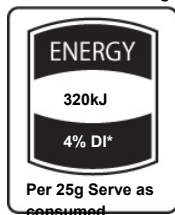
2138,

**Country**

Australia.

**Consumer Contact Phone**

In Australia call 1800 025 361

**Country of Origin Labelling****Made in Spain****Australasian Recycling Label**Get the latest  
recycling advice  
[arl.org.au](http://arl.org.au)**Health Star Rating**

Status: Active

Effectivity:

Date of Issue: 04/03/2025 @ 18:21

**nutribank.**  
OnPack

**Disclaimer:** This information is correct at date of issue and may be subject to change. Please check the product label before consuming product.